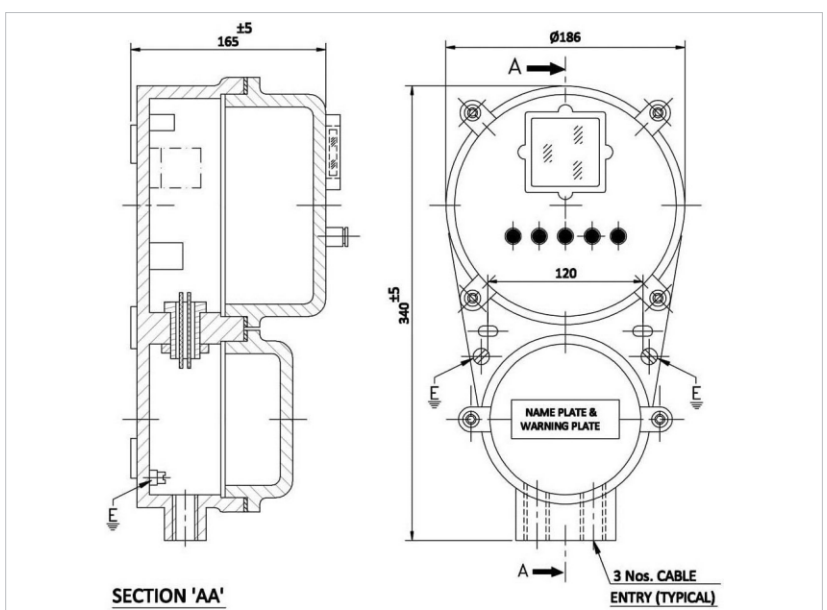


PATCO FLAME PROOF PRODUCTS

Manufacturer of : Flameproof / Weatherproof, Electrical Equipment, Lighting Fittings, LED Lighting Fittings, Instruments Enclosure & Cable Glands Tested Certified by CIMFR, Dhanbad

FLP / WP INSTRUMENT ENCLOSURE WITH 74 X 74 GLASS WINDOW & 3 - 5 NOS PUSH BUTTONS



Catalogue No.	PFP/IB/08
Type of Ex-Protection	AS PER IS / IEC-60079-1:2007
Zone Classification	Zone 1 & Zone 2
Gas Group	Gas Group I, IIA, IIB
Ingress IP Protection	IP-65 IS / IEC60529-2001
Material of Contraction	Die Cast Aluminum Alloy LM6
Glass Window	1 No. 74 X 74 mm Glass Window
Contact Element	Electronics PCB with 4-5 Nos. Key / 4-5 Nos. 10A No. Elements
Push	4-5 Nos. Green Push
Terminal	12 Way Clip on Rail or Strip Type
Paint	Epoxy Polyester Powder Coating
Earthling	Internal: 01 No. & External: 2 Nos.
Cable Entry	03-05 Nos. for M20 (3/4" ET)
Hardware	Stainless Steel